

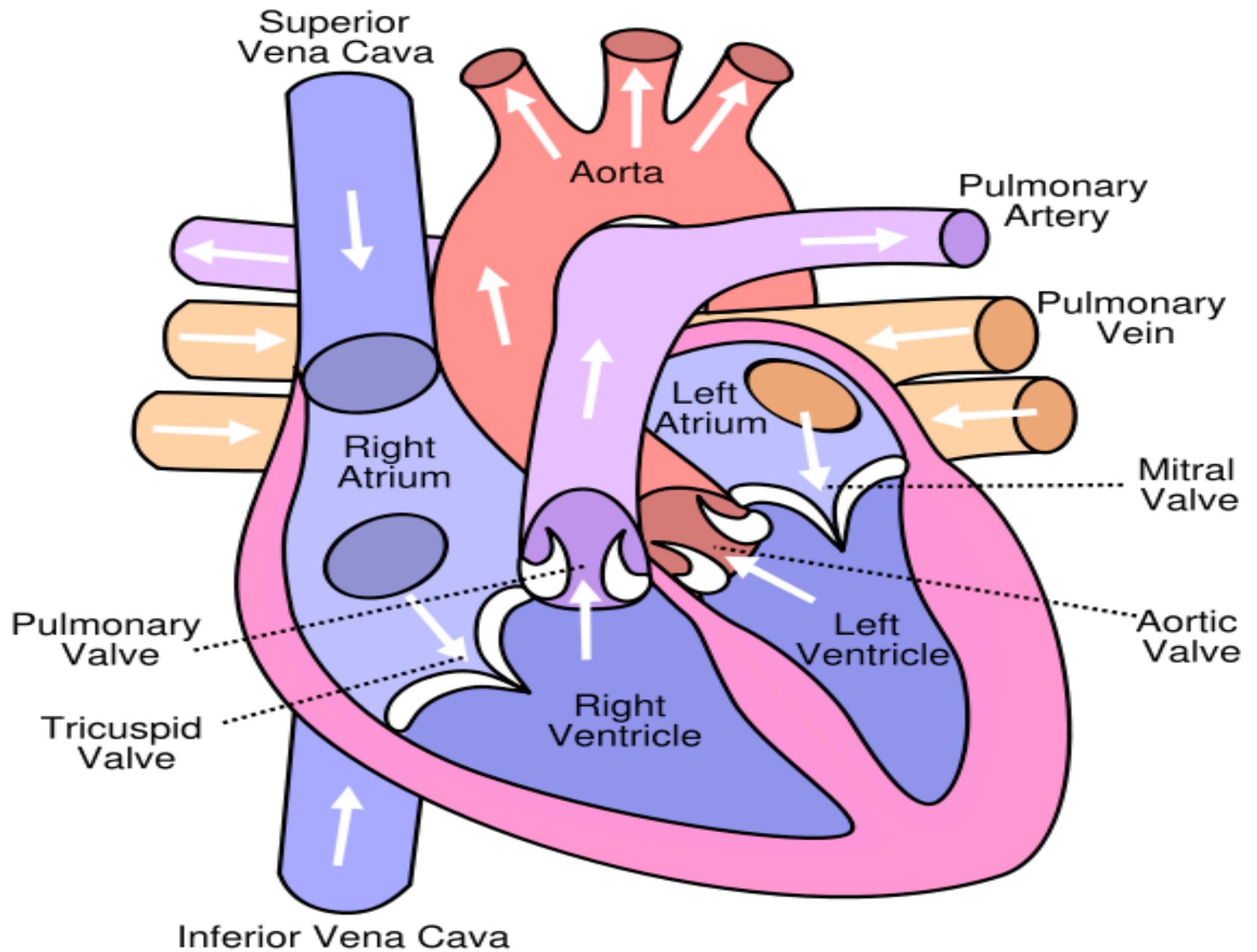
THE PATH OF BLOOD FLOW IN THE HUMAN BODY

- MAMMALS HAVE WHAT IS KNOWN AS A DOUBLE LOOP CIRCULATION
- THE RIGHT HALF OF THE HEART PUMPS BLOOD TO THE LUNGS AND BACK
- THE LEFT HALF OF THE HEART PUMPS THE BLOOD TO THE REST OF THE BODY AND BACK

ANATOMY OF THE HEART

THE HEART CONSISTS OF:

- 4 CHAMBERS (ATRIA & VENTRICLES)
- VALVES THAT ACT AS DOORS THAT SEPARATE THE CHAMBERS
- VESSELS THAT LEAD INTO AND OUT OF THE HEART



HERE'S A TRICK TO REMEMBER

- ARTERIES → AWAY

- ARTERIES ALWAYS CARRY BLOOD AWAY FROM THE HEART

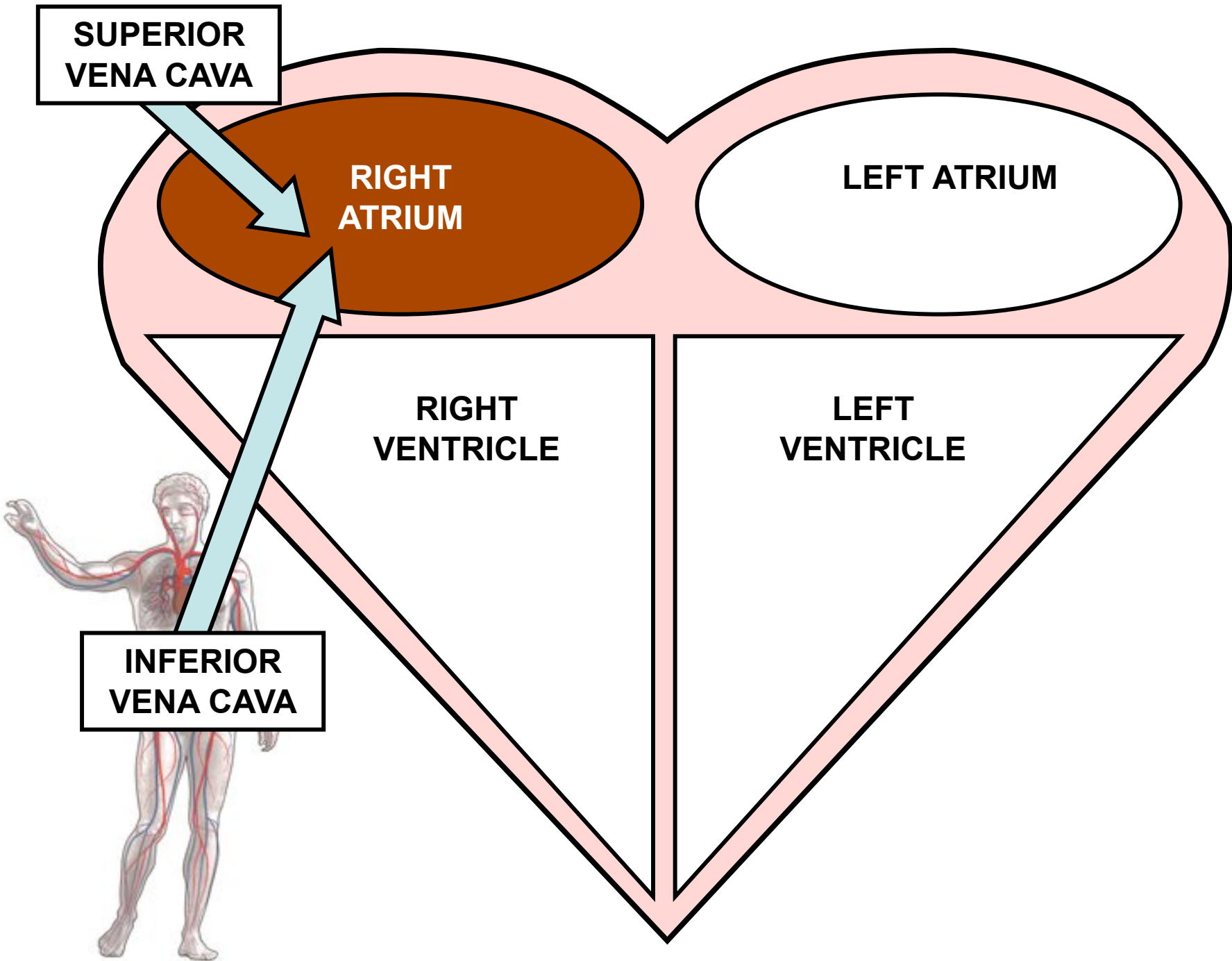
- VEINS → IN

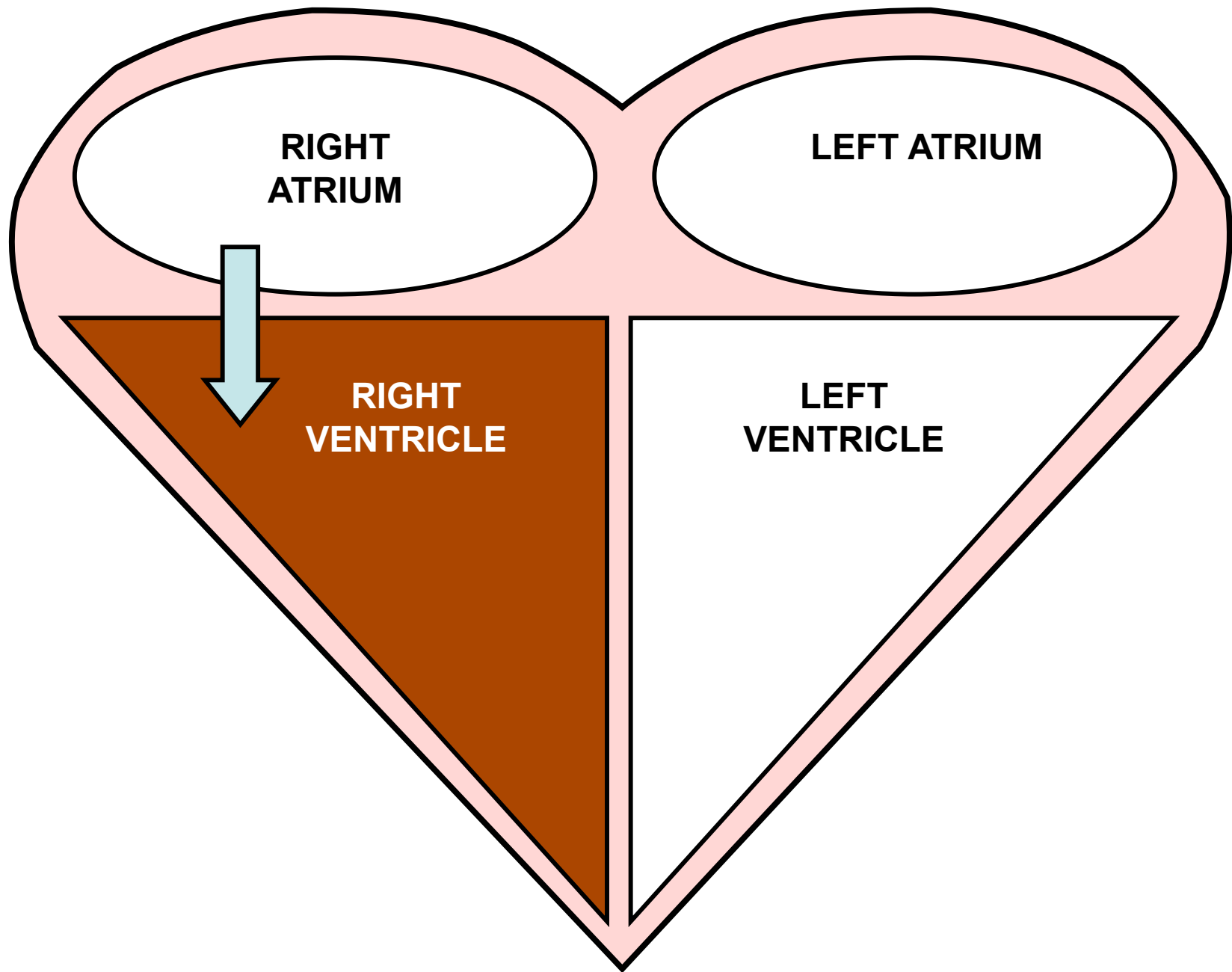
- VEINS ALWAYS CARRY BLOOD IN TO THE HEART

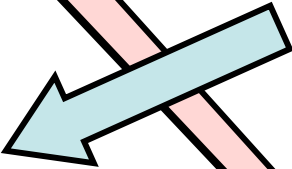
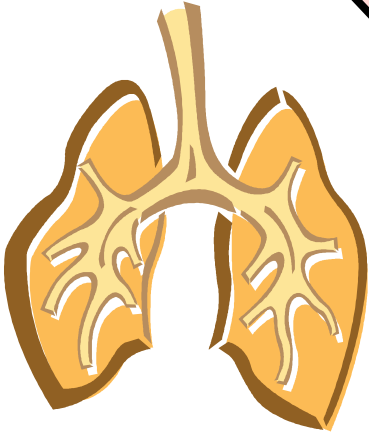
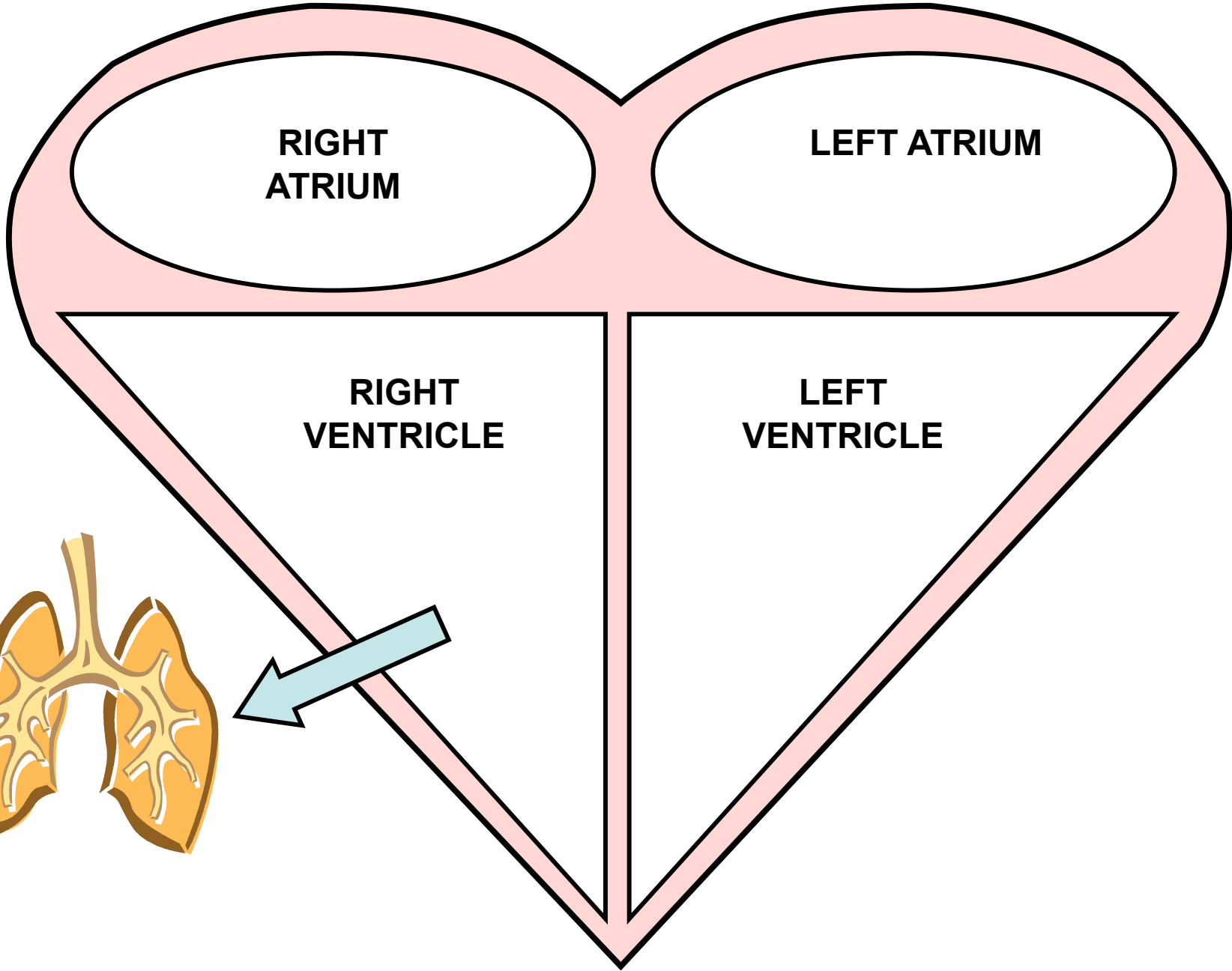
LETS TAKE A TRIP!

- YOU HAVE JUST BEEN ZAPPED WITH MR. R's SHRINK RAY
- YOU ARE NOW THE SIZE OF A RED BLOOD CELL
- MR. R WILL NOW INJECT YOU INTO A VEIN IN THE LEG OF A LIVING PERSON
- ENJOY THE RIDE!

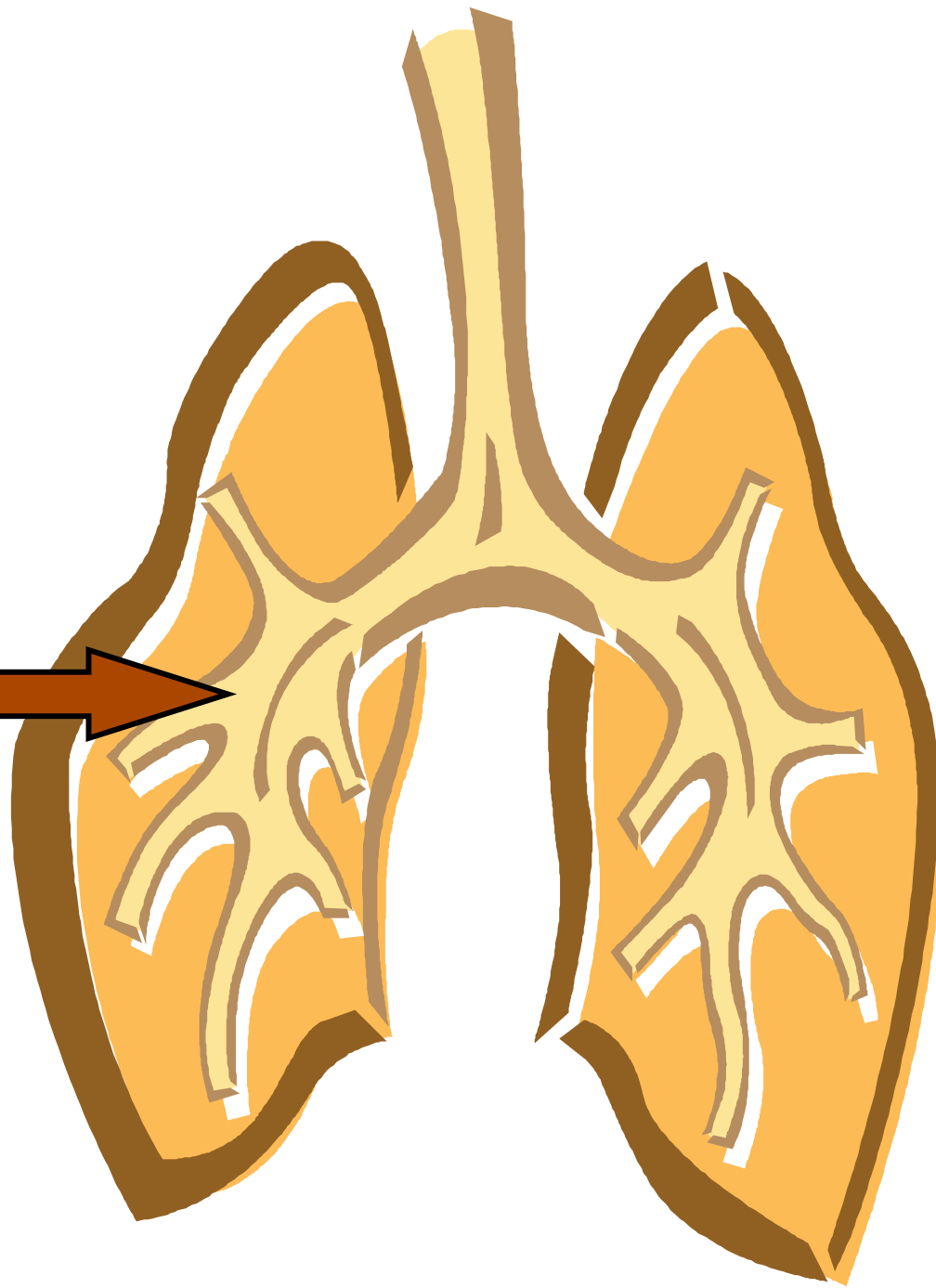


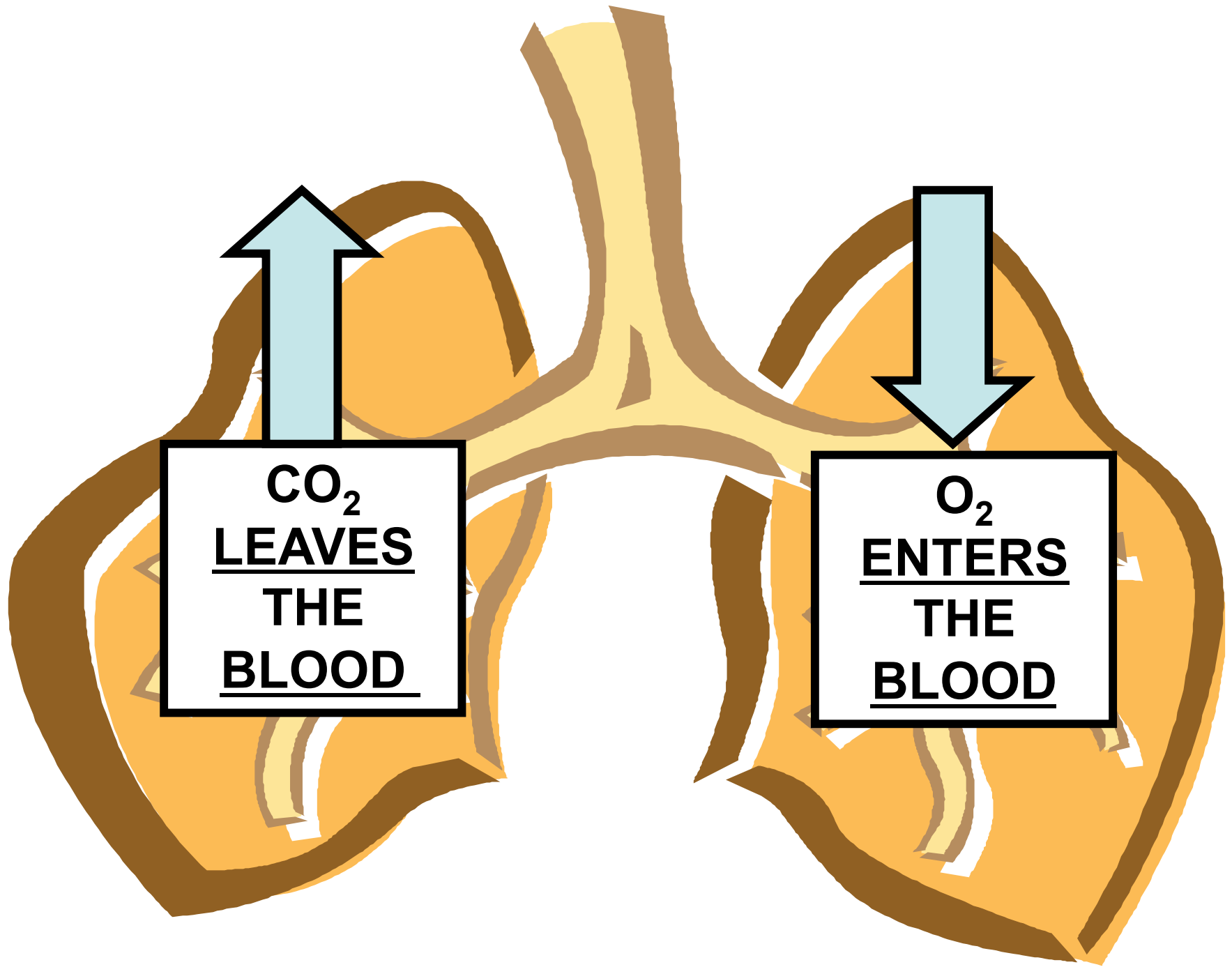






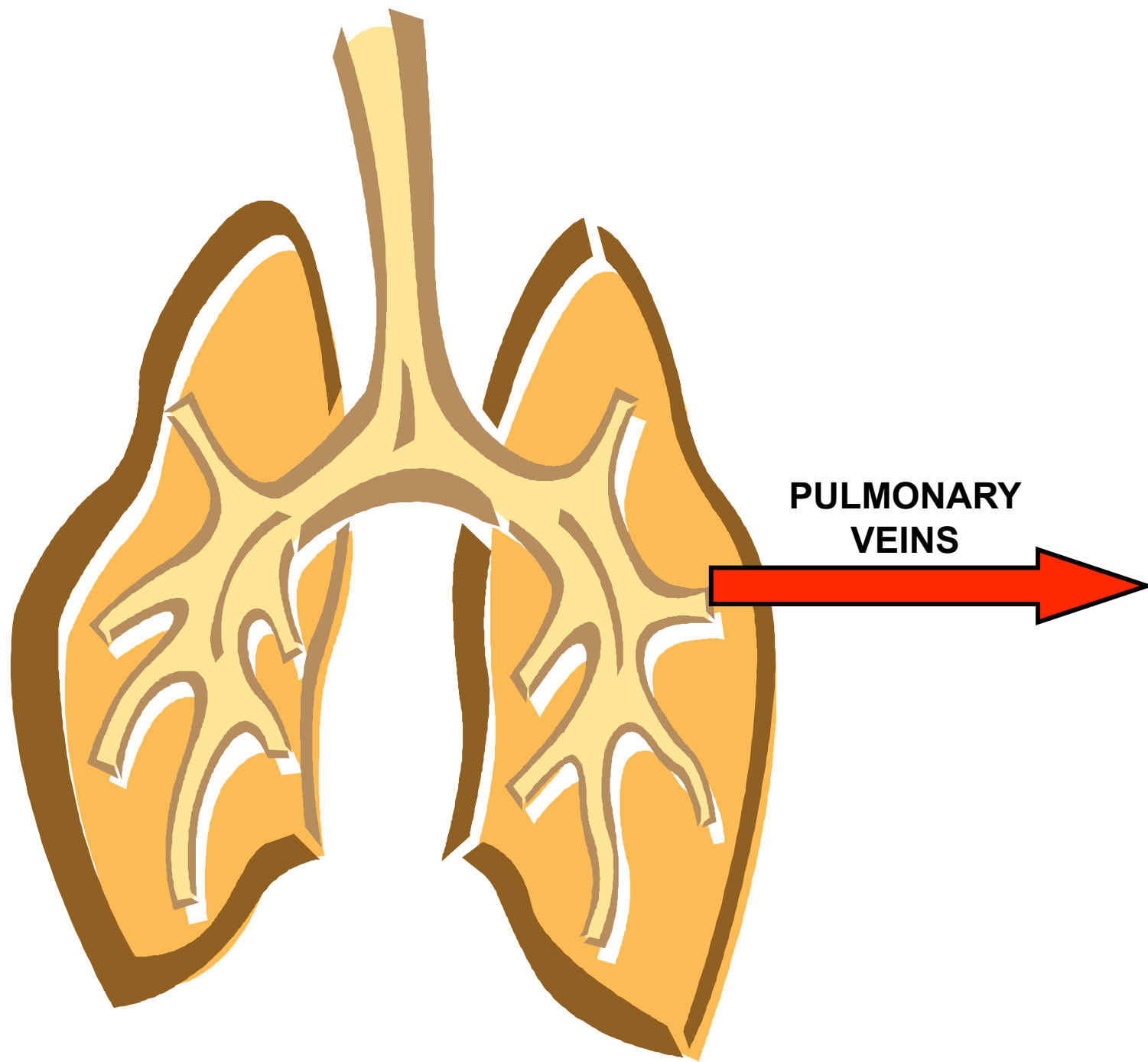
**PULMONARY
ARTERYS**



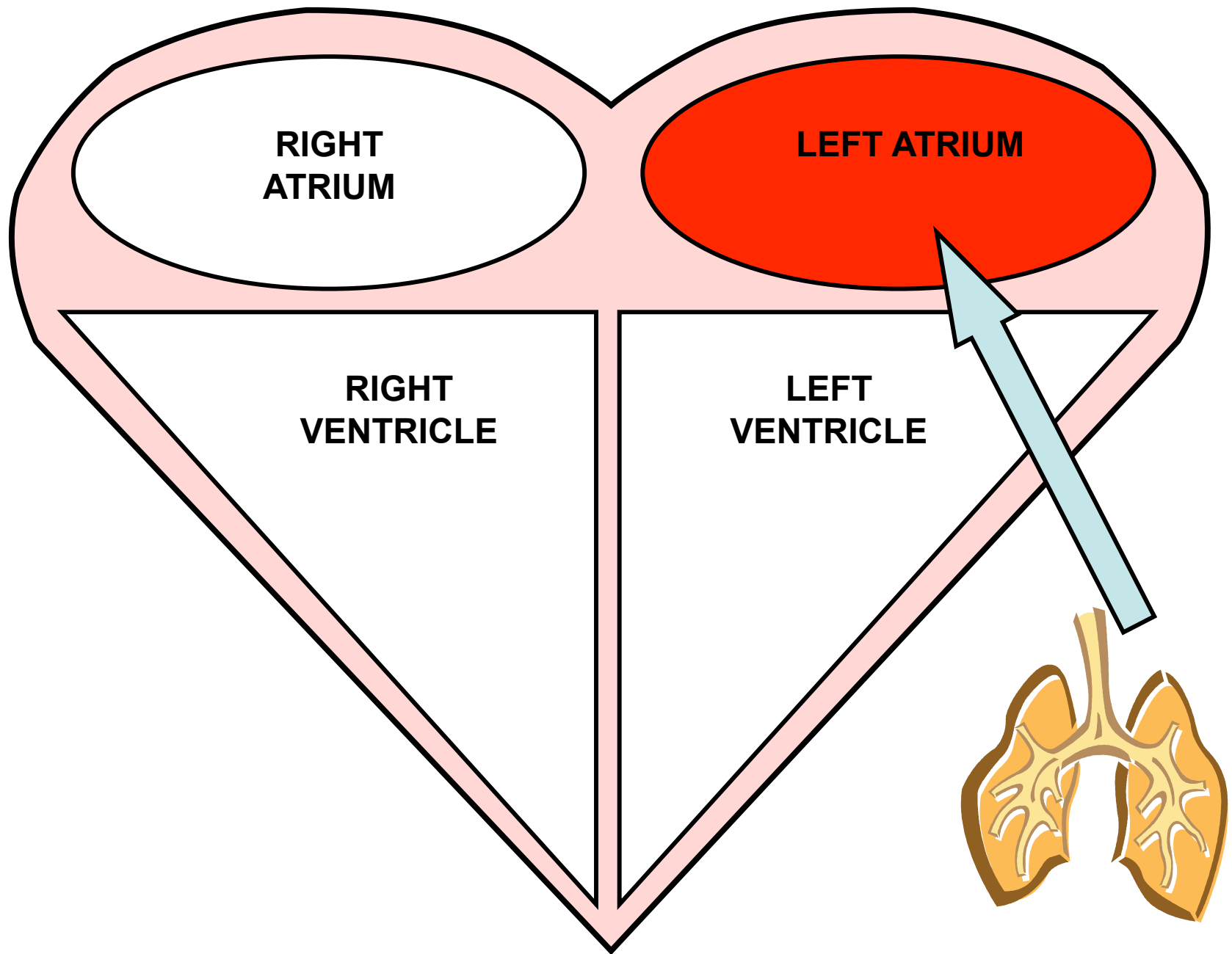


CO₂
LEAVES
THE
BLOOD

O₂
ENTERS
THE
BLOOD



**PULMONARY
VEINS**

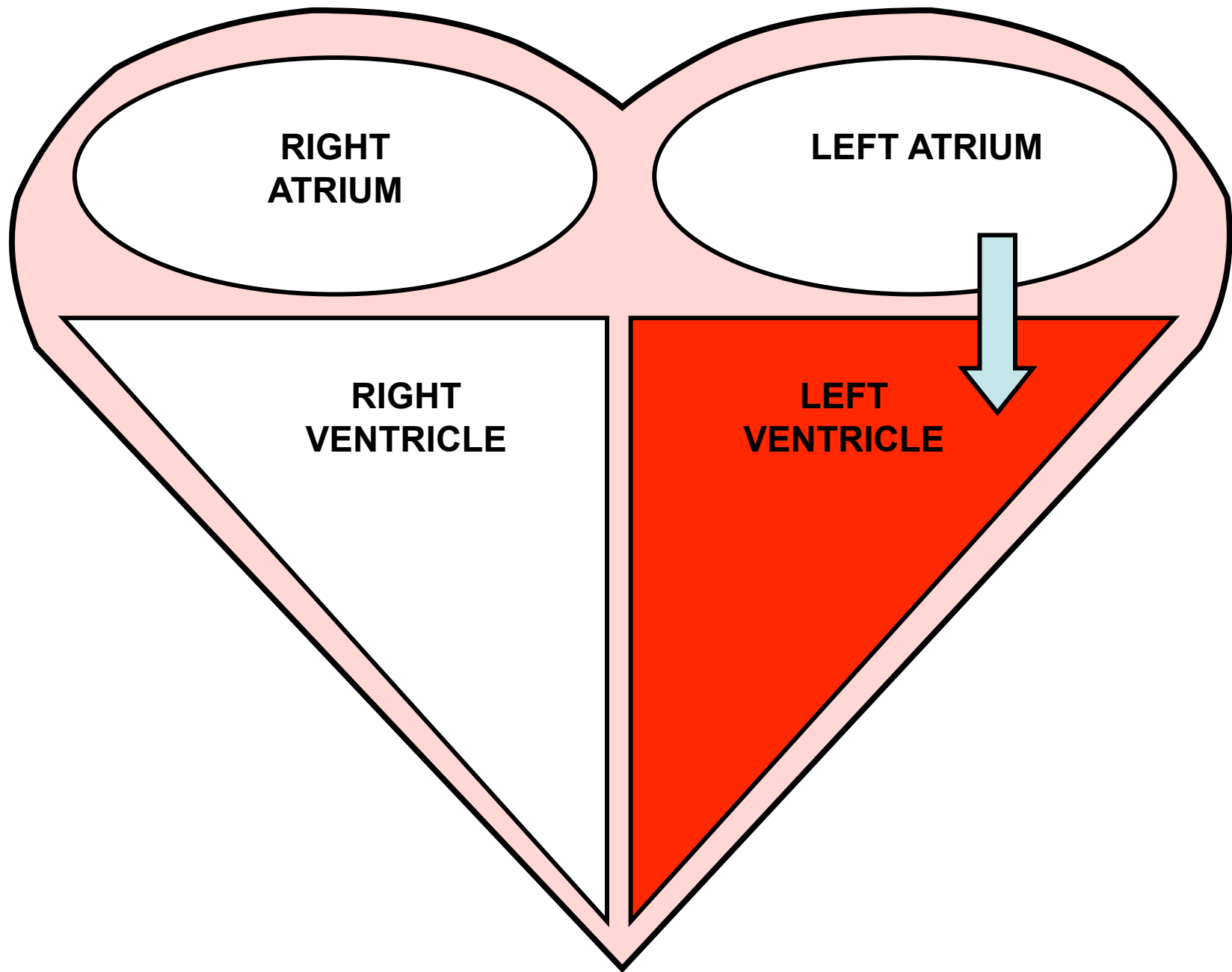


**RIGHT
ATRIUM**

LEFT ATRIUM

**RIGHT
VENTRICLE**

**LEFT
VENTRICLE**



**RIGHT
ATRIUM**

LEFT ATRIUM

**RIGHT
VENTRICLE**

**LEFT
VENTRICLE**

